

MEYTON CGI Control - PC



Author : Teodora – Pamerak Czerny

MEYTON Elektronik GmbH
Spenger Str 38
49328 Melle – Bruchmühlen
Tel.: +49 5226 9824 0
Fax.:+49 5226 9824 20

Index

Introduction.....	3
1. Activation of the CGI program.....	3
2. Admin Program.....	4
2.1 Explanation of the fields.....	4
2.1.1 IN Address	4
2.1.2 Netmask	4
2.1.3 HW Address	4
2.1.4 Action	4
2.1.5 Uptime	4
2.1.6 Temperature	5
2.2 Change settings.....	5
2.3 Undo the settings.....	5
3. CPC Settings.....	5
3.1 Explanation of the fields.....	6
3.1.1 range ID.....	6
3.1.2 Timezone.....	7
3.1.3 Language.....	8
3.1.4 Discipline.....	9
3.1.5 Printer.....	10
3.1.6 Control panel.....	11
3.1.7 Video mode (VGA).....	12
3.1.8 Backlight value.....	13
3.2 Change settings.....	13
3.3 Undo settings.....	13
4. Filelist under Services.....	14
5. Download under Services.....	15

Introduction

In this manual the Control – PC - CGI (Common Gateway Interface) is explained. The „CGI“ is an interposition interface for the data exchange between a browser and the Control – PC software.

With this tool all administrative settings for the Control – PC can be conducted.

1. Activation of the CGI program

The „CGI“ can be activated in a browser, e.g. Firefox or Explorer, by entering the IN address of the device.

The following program appears:

Services

- [CPC settings](#)
- [Filelist](#)
- [Download](#)

Admin Program for Meyton's CPC - 1.0.0c

IN Address	Netmask	HW Address	Action	uptime	temperature
192.168.178.2	255.255.0.0	00:E0:4B:1F:DE:99	no action	0:42:30 (busy 1.2%)	board: 50°C cpu: 60°C

enter clear

CPC settings

Parameter	Value
range id	1
timezone	Berlin
language	de
discipline	LG 40 1.10
printer	IP 192.168.178.240
control panel	control panel connected to LPT port
video mode (VGA)	XVGA (1024 x 768)
backlight value	0

enter clear

Fertig

This view is divided into three blocks: Services, Admin and Settings.

At first the block „Admin Program for Meyton's CPC – 1.0.0c“ is explained.

2. Admin Program

Admin Program for Meyton's CPC - 1.0.0c

IN Address			Netmask	HW Address	Action	uptime	temperature
192.168.	178.	2	255.255.0.0	00:E0:4B:1F:DE:99	no action	0:42:30 (busy 1.2%)	board: 50°C cpu: 60°C

enter clear

In this field the network interface can be adjusted.

2.1 Explanation of the fields

2.1.1 IN Address

IN Address		
192.168.	178.	2

Setting of the IN address.

In the front area a number between 172.16. and 192.168. can be chosen.

The subnet (third figure of the IN address) can be adjusted freely between 1 und 255.

The last IN interface should be between 1 und 160.

2.1.2 Netmask

Netmask
255.255.0.0

Concerning the netmask, the B or C net can be chosen.

2.1.3 HW Address

HW Address
00:E0:4B:1F:DE:99

It is about a fixed entry which is preset by the hardware.

2.1.4 Action

Action
no action

Apart from „no action“, „reboot the System“ can be adjusted here, too.

2.1.5 Uptime

uptime
0:42:30 (busy 1.2%)

This window shows the operation time of the system.

2.1.6 Temperature

temperature
board: 50°C cpu: 60°C

This field shows the temperature of the system (is only diplayed in case of LX modules).

2.2 Change settings

In order that an adjustment is adopted by the system, „reboot the System“ must be chosen in the window „Action“ and afterwards the button „enter“ must be pressed.

2.3 Undo the settings

By pressing the „clear“ button all settings are cancelled.

3. CPC Settings

Further settings can be adjusted here, with which the Control - PC shall boot every time.

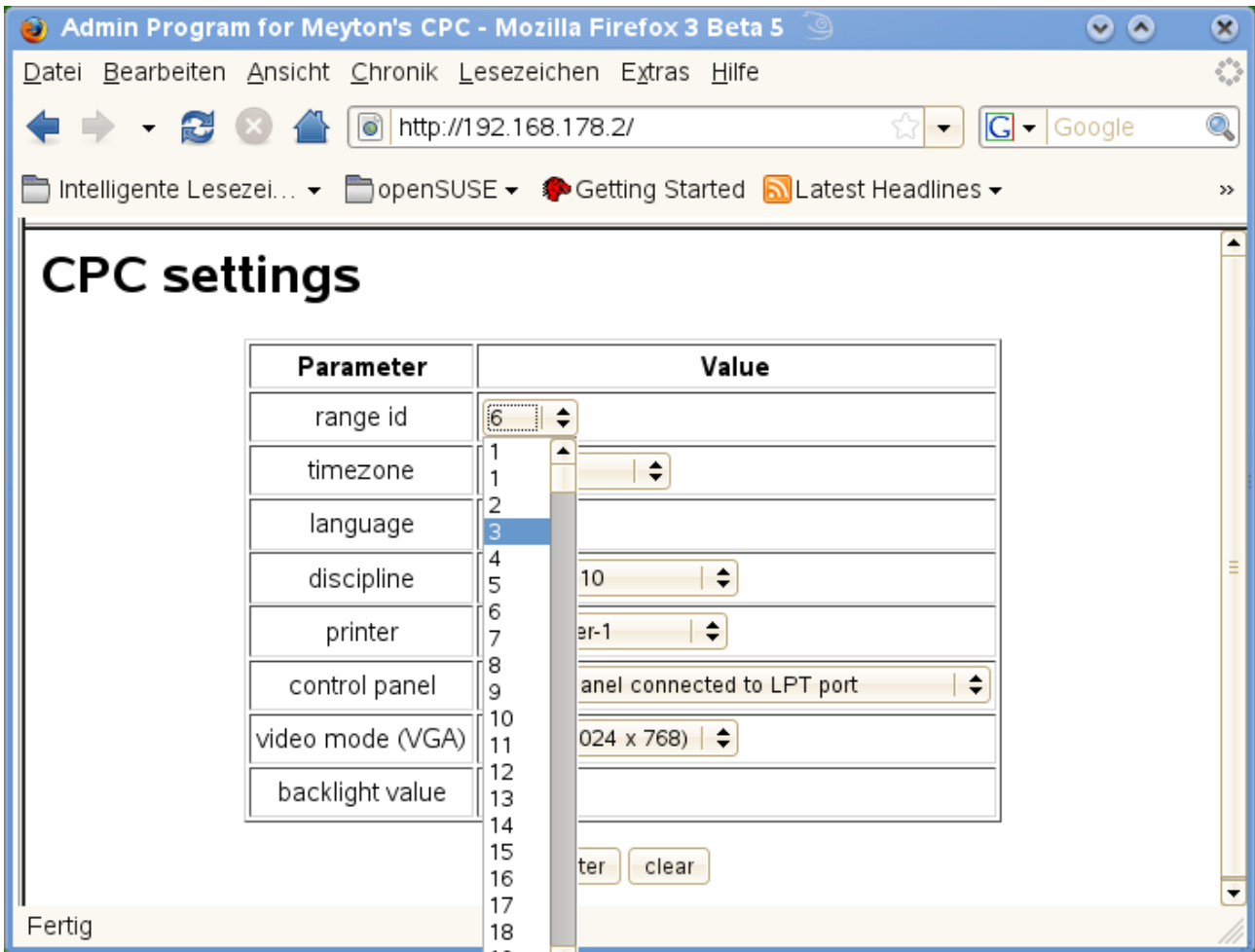
CPC settings

Parameter	Value
range id	6 ⬇
timezone	Berlin ⬇
language	de ⬇
discipline	LG 40 1.10 ⬇
printer	SMPrinter-1 ⬇
control panel	control panel connected to LPT port ⬇
video mode (VGA)	XVGA (1024 x 768) ⬇
backlight value	0 ⬇

enter clear

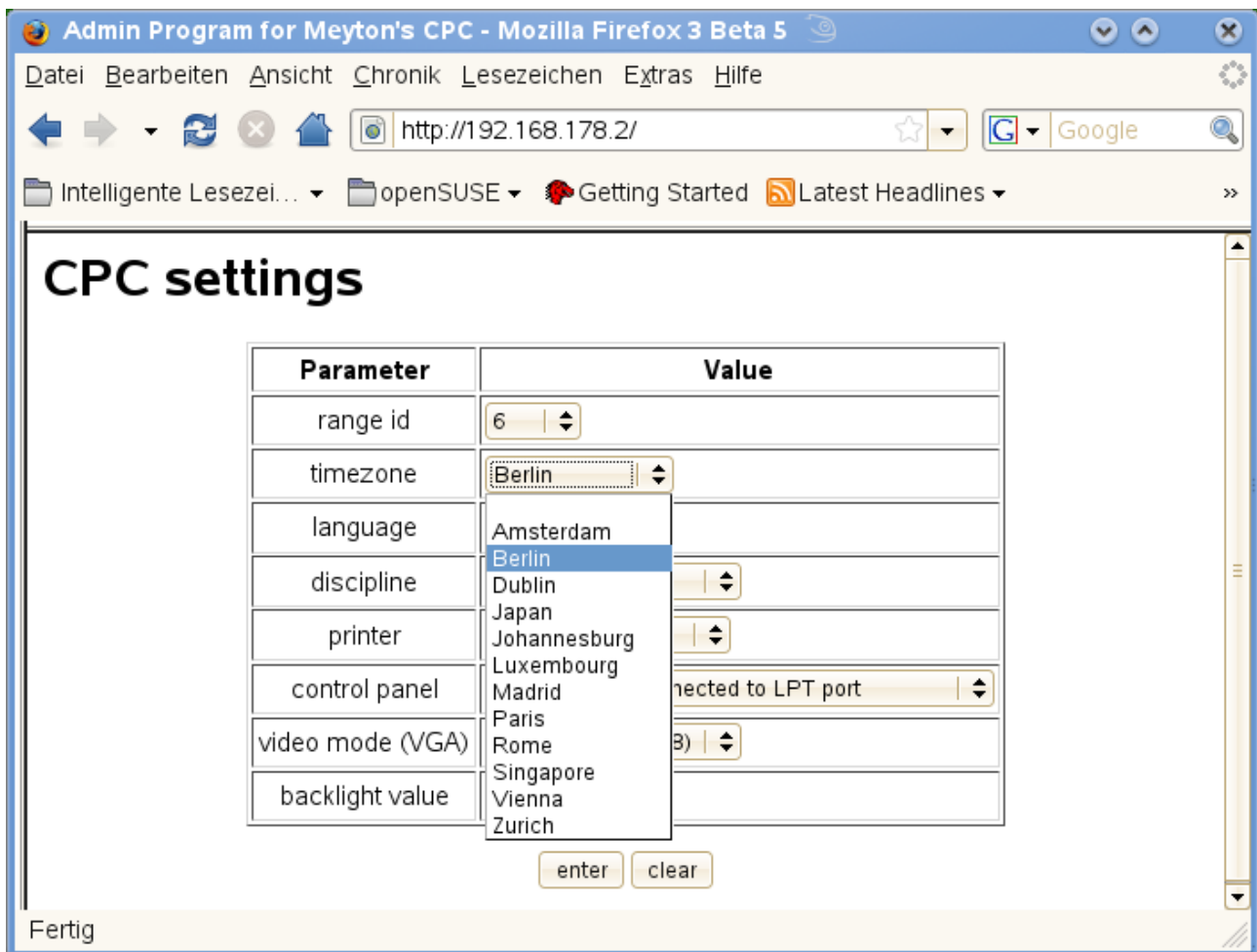
3.1 Explanation of the fields

3.1.1 range ID



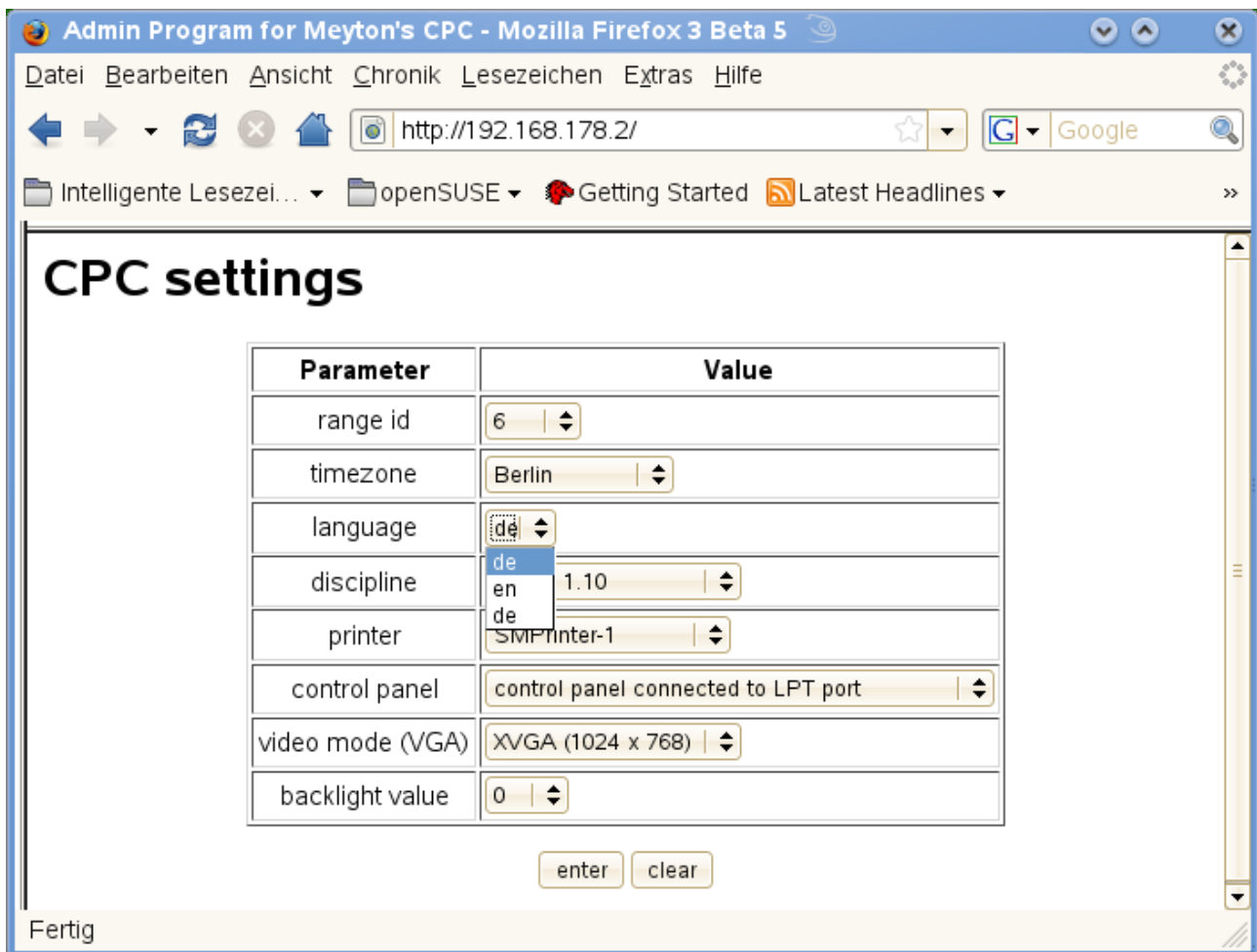
Here the range number is entered which appears on the monitor top right.

3.1.2 Timezone



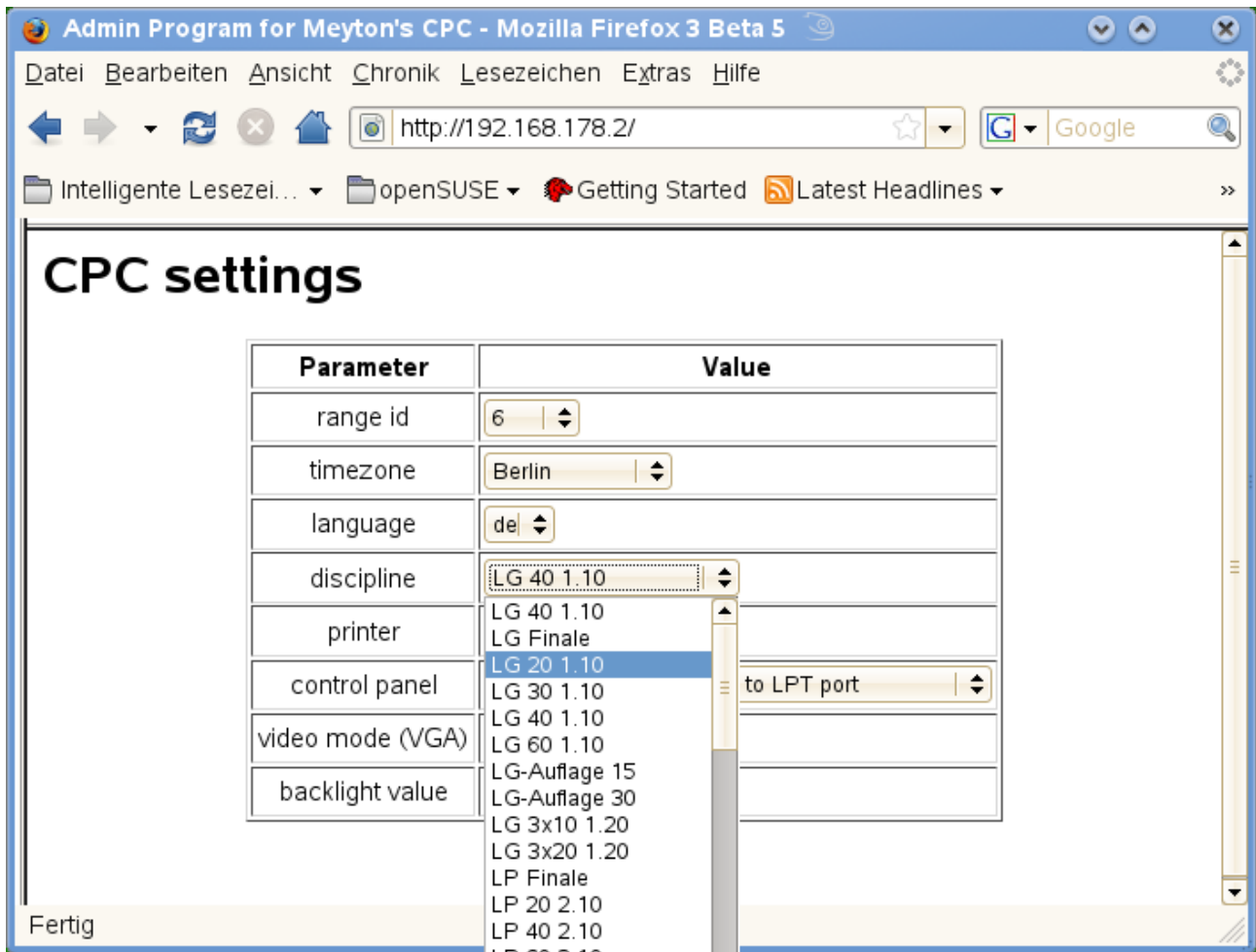
Here you can choose the timezone.

3.1.3 Language



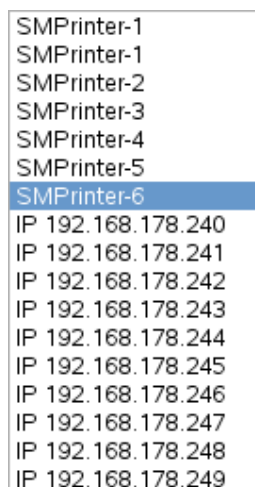
At the moment it is only possible to choose here between English and German.

3.1.4 Discipline



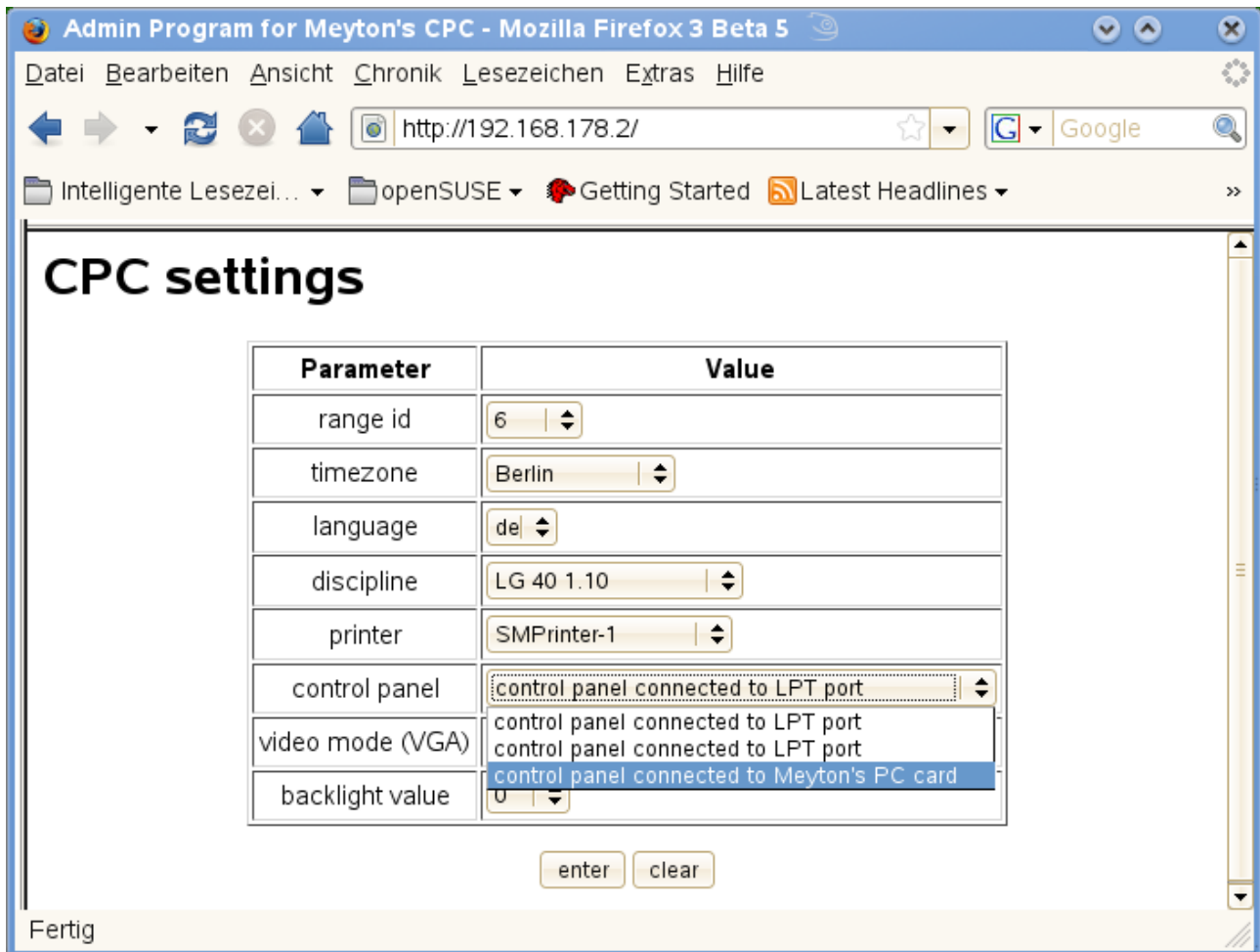
Here the discipline can be chosen, with which the Control - PC starts.

3.1.5 Printer



Here the printer can be chosen on which the Control - PC shall print. SMPrinter is the setting for printing through a workstation and the IN (IP) stands for network printers.

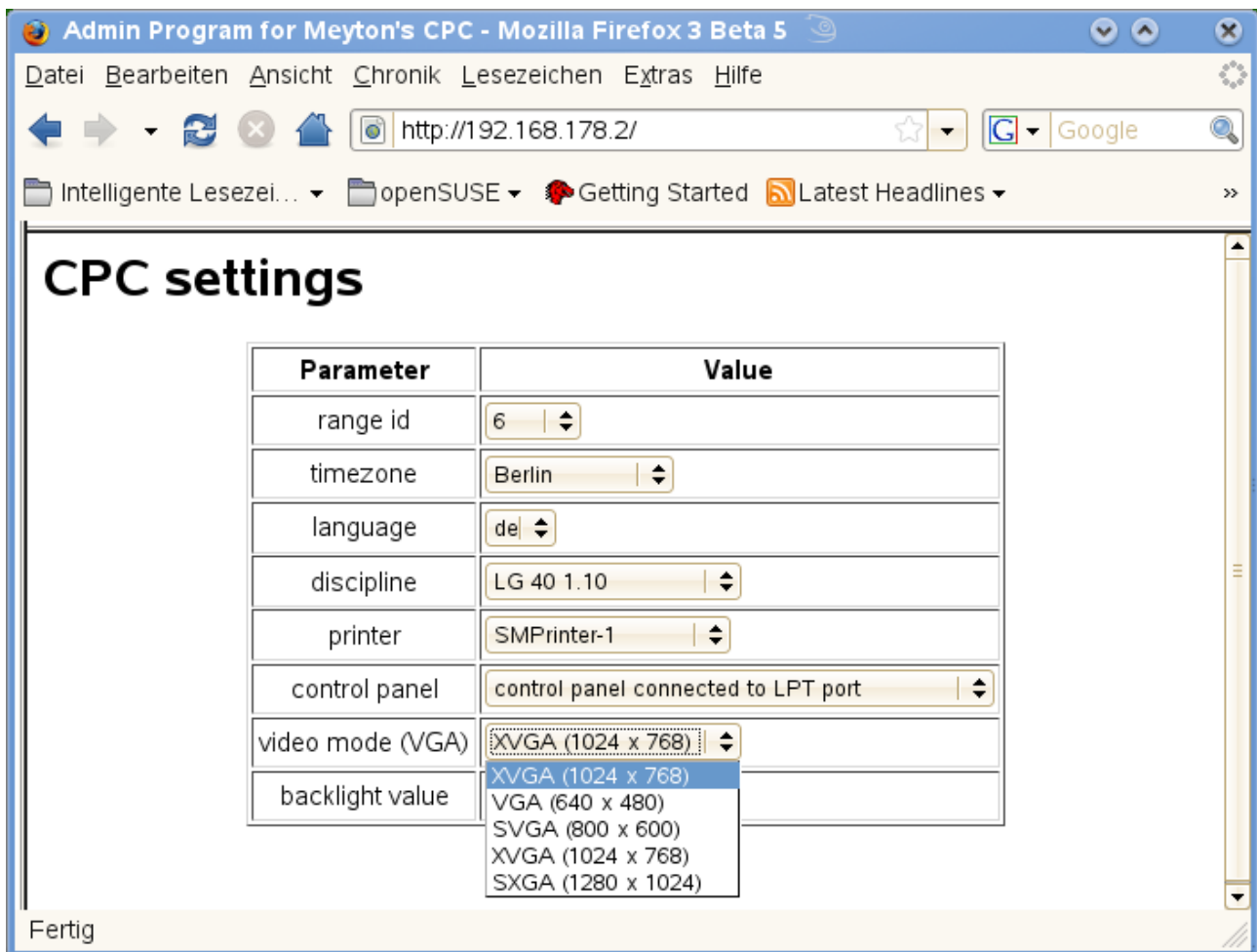
3.1.6 Control panel



Settings for the connection interface of the control panel:

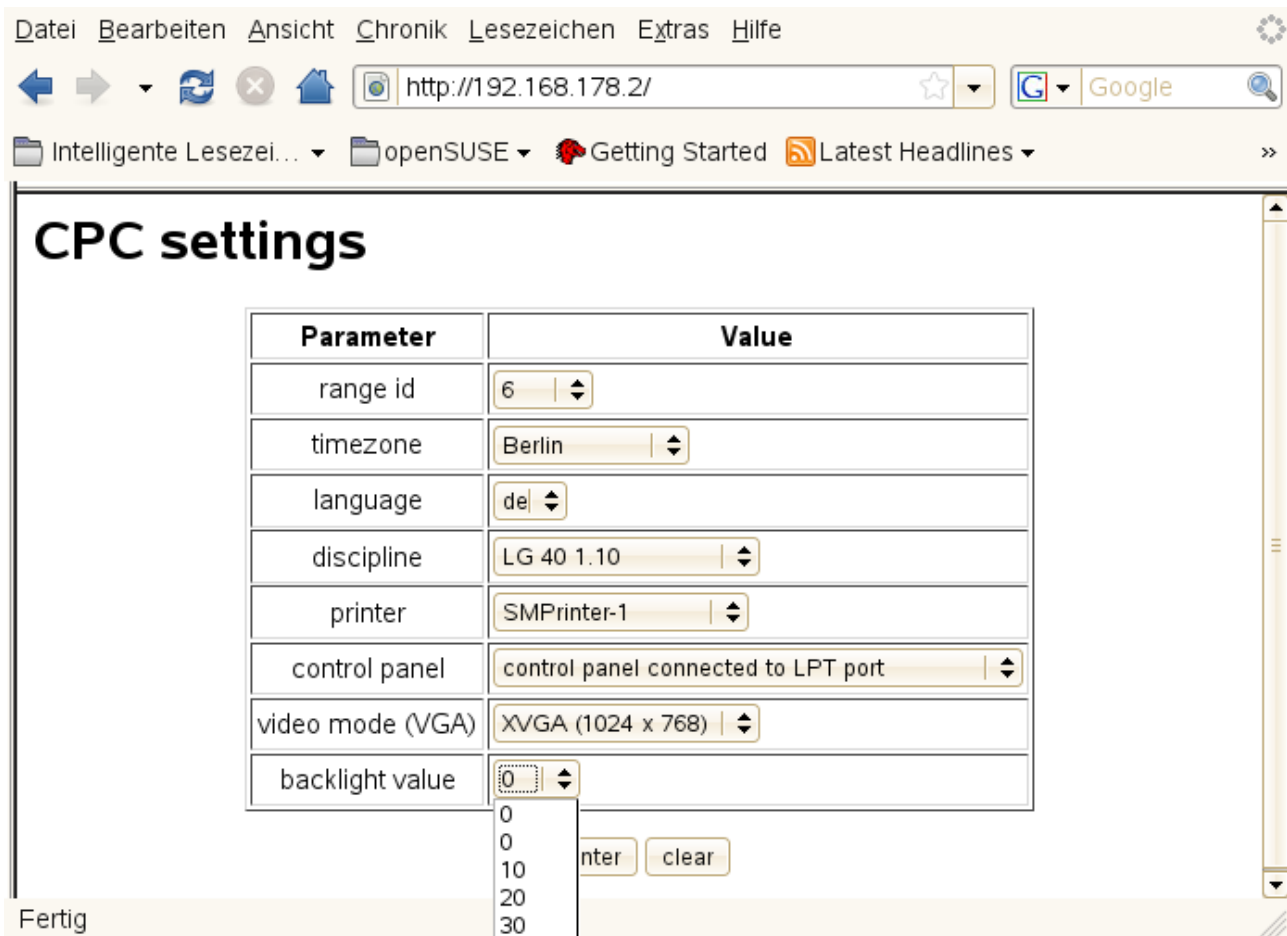
- control panel connected to LPT port
setting for the common Control – PC models
- control panel connected to Meyton's PC card
Setting for MEYTON Control – PCs of long standing, which has been upgraded.

3.1.7 Video mode (VGA)



Here the resolution of the monitor is adjusted.

3.1.8 Backlight value



These settings only effect a change in case of a Compact Control - PC. With this adjustment the brightness of the Control – PC display can be set.

3.2 Change settings

All settings are adopted by pressing the „enter“ button under „CPC Settings“. In order to display the settings, the system must be restarted. The restart can be effected by adjusting „reboot the System“ under „Action“ and pressing afterwards „enter“.

3.3 Undo settings

By pressing the „clear“ key under „CPC Settings“ all settings are cancelled.

4. Filelist under Services

When choosing „Filelist“, a list of the download data is displayed which the Control - PC has loaded at the moment.

The screenshot shows the web interface for the 'Admin Program for Meyton's CPC - 1.0.0c'. On the left, a sidebar titled 'Services' contains three links: '1. CPC settings', '2. Filelist', and '3. Download'. The main content area is divided into two sections. The top section, titled 'Admin Program for Meyton's CPC - 1.0.0c', features a table with columns: 'IN Address', 'Netmask', 'HW Address', 'Action', 'uptime', and 'temperature'. Below this table are 'enter' and 'clear' buttons. The bottom section, titled 'Filelist of last Download', contains a table with columns: 'No', 'source', 'version', 'destination', 'size [byte]', and 'date'. The table lists 18 downloaded files with their respective details.

IN Address	Netmask	HW Address	Action	uptime	temperature		
192.168.1	178.1	2	255.255.0.0	00:E0:4B:1F:DE:99	no action	0:42:30 (busy 1.2%)	board: 50°C cpu: 60°C

enter clear

Filelist of last Download

Download from Server: 192.168.178.200 - Date: 27. Jul 2008 16:14:56					
No	source	version	destination	size [byte]	date
1	/tftpboot/Mc4BootDev/cpc-ix/syslinux.cfg	2.4.31Sb	/flash/syslinux.cfg	138	19. Mai 2008 9:48:50
2	/tftpboot/Mc4BootDev/cpc-ix/cpc_ix.tgz	2.4.31i	/flash/cpc_ix.tgz	2417131	7. Jul 2008 18:16:42
3	/tftpboot/Mc4BootDev/cpc-ix/vmlinuz	2.4.31i	/flash/linux	728599	7. Jul 2008 18:16:56
4	/tftpboot/Mc4BootDev/emb-stable/mc5sbc	3.1.0	/flash/mc5sbc	43376	8. Jul 2008 12:58:24
5	/tftpboot/Mc4BootDev/emb-stable/mc5sbc.sh	2.0.0	/flash/meyton/mc5sbc.sh	1454	10. Dec 2006 11:03:32
6	/tftpboot/Mc4BootDev/emb-stable/mc5timed	1.1.1a	/flash/mc5timed	18620	8. Jul 2008 12:58:28
7	/tftpboot/Mc4BootDev/emb-stable/start1.sh	2.0.2	/flash/meyton/start1.sh	2200	26. Jul 2008 10:15:32
8	/tftpboot/Mc4BootDev/emb-stable/start2-cpc.sh	3.0.0c	/flash/meyton/start2.sh	4826	27. Jul 2008 16:14:48
9	/tftpboot/Mc4BootDev/emb-stable/mc5cpclx	2.2.3b	/flash/mc5cpclx	5575804	26. Jul 2008 16:18:00
10	/tftpboot/Mc4BootDev/emb-stable/mc5cp_de.qm	2.2.2e	/flash/meyton/mc5cp_de.qm	13434	22. Jul 2008 12:25:26
11	/tftpboot/Mc4BootDev/emb-stable/mc5cp_en.qm	2.2.2e	/flash/meyton/mc5cp_en.qm	12970	22. Jul 2008 12:25:26
12	/tftpboot/Mc4BootDev/emb-stable/mf4gwlx	4.1.1	/flash/mf4gwlx	60204	8. Jul 2008 12:58:48
13	/tftpboot/Mc4BootDev/emb-stable/cpccgi.cgi	1.0.0c	/flash/cpccgi.cgi	51392	27. Jul 2008 16:32:38
14	/tftpboot/Mc4BootDev/emb-stable/matches.bin	1.0.0en	/flash/meyton/matches.bin	65536	31. Oct 2007 17:39:00
15	/tftpboot/Mc4BootDev/emb-stable/qtlib.cpc	1.0.6	/flash/qtlib	6144000	10. Dec 2006 11:04:44
16	/tftpboot/Mc4BootDev/emb-stable/match_de.bin	1.0.0	/flash/meyton/match_de.bin	65536	31. Oct 2007 17:38:44
17	/tftpboot/Mc4BootDev/emb-stable/match_en.bin	1.0.0a	/flash/meyton/match_en.bin	65536	4. Apr 2008 9:55:38
18	/tftpboot/Mc4BootDev/emb-stable/match_bs.bin	1.0.0	/flash/meyton/match_bs.bin	65536	31. Oct 2007 17:39:34

http://192.168.178.2/cpccgi-fl.cgi

5. Download under Services

The screenshot displays a web browser window with the URL `http://192.168.178.2/`. The browser's address bar shows the URL, and the page title is "Admin Program for Meyton's CPC - 1.0.0c".

On the left side, there is a "Services" menu with the following items:

1. [CPC settings](#)
2. [Filelist](#)
3. [Download](#)

The main content area is divided into two sections:

Services

IN Address	Netmask	HW Address	Action	uptime	temperature
192.168. 178. 2	255.255.0.0	00:E0:4B:1F:DE:99	no action	0:42:30 (busy 1.2%)	board: 50°C cpu: 60°C

Below the table are two buttons: "enter" and "clear".

Download

Parameter	Value
IP address of ftp server	192.168. 178. 200.

Below the table is a button: "start Download".

The browser's status bar at the bottom shows the URL: `http://192.168.178.2/cpccgi-dl.cgi`.

Here the server can be chosen from which new data shall be downloaded.