

MEYTON CGI Display Controller



Author : Teodora – Pamerak Czerny

MEYTON Elektronik GmbH
Spenger Str 38
49328 Melle – Bruchmühlen
Tel.: +49 5226 9824 0
Fax.:+49 5226 9824 20

Index

Introduction.....	3
1. Activation of the CGI program.....	3
2. Network interface.....	4
2.1 Explanation of the fields.....	4
IN Address	4
Netmask	4
HW Address	4
Action	4
Uptime	4
Temperature	5
2.2 Change settings.....	5
2.3 Undo the settings.....	5
3. Control Center.....	5
3.1 Explanation of the fields.....	6
Current program.....	6
Display mode.....	7
section of ranges.....	7
Write.....	8
Load Setup defaults.....	8
Language.....	8
3.2 Change settings.....	9
3.3 Undo settings.....	9
4. Program settings under Services.....	9
4.1 CpcView.....	9
4.1.1 Target per screen.....	9
4.1.2 Holding time.....	9
4.2 DrawTarget.....	10
4.2.1 Colours.....	10
4.2.2 Holding time.....	10
4.3 Final.....	11
4.3.1 Colours.....	11
4.3.2 Holding time.....	11
4.3.3 Font Size.....	11
4.4 Liga.....	12
4.3.1 Colours.....	12
4.3.2 Holding time.....	12
4.4.3 Font Size.....	12
4.5 HtmlView.....	13
4.5.1 Holding time.....	13
4.5.1 Scroll Step.....	13
4.5.1 Font Size.....	13
4.5.1 Shared Folder.....	13
4. Filelist under Services.....	14
5. Download unter Services.....	15

Introduction

In this manual the Control – PC - CGI (Common Gateway Interface) is explained. The „CGI“ is an interposition interface for the data exchange between a browser and the Control – PC software.

With this tool all administrative settings for the Control – PC can be conducted.

1. Activation of the CGI program

The „CGI“ can be activated in a browser, e.g. Firefox or Explorer, by entering the IN address of the device.

The following program appears:

The screenshot shows a web browser window with the address bar containing 'http://192.168.178.170/'. The browser's menu bar includes 'Datei', 'Bearbeiten', 'Ansicht', 'Chronik', 'Lesezeichen', 'Extras', and 'Hilfe'. The browser's toolbar shows navigation buttons and a search bar with 'Google'. The browser's status bar shows 'Intelligente Lesezei...', 'openSUSE', 'Getting Started', 'Latest Headlines', and 'Mozilla Firefox'.

The main content area is titled 'Display Controller (DC) Einstellungen - 2.0.0a'. It features a table with the following data:

IN Address	Netmask	HW Address	Action	uptime
192.168.178.170	255.255.0.0	00:E0:4B:1F:F3:63	no action	0:00:51 (busy 68.7%)

Below the table are 'enter' and 'clear' buttons.

The 'Control Center' section contains a table with the following data:

Parameter	Value
current program	CpcView
display mode	SVGA 800x600
1st section of ranges	from 1 to 1023
2nd section of ranges	from 0 to 0
3rd section of ranges	from 0 to 0
4th section of ranges	from 0 to 0
5th section of ranges	from 0 to 0
write	the temporary settings

Below the table are 'Load Setup Defaults', 'English', and 'deutsch' radio buttons, and 'enter' and 'clear' buttons.

The browser's status bar shows 'Fertig'.

This view is divided into three blocks: Services, Admin and Settings.

At first the block „Display Controller (DC) Einstellung -2.0.0a“ is explained. ein.

2. Network interface

Display Controller (DC) Einstellungen - 2.0.0a

IN Address	Netmask	HW Address	Action	uptime
192.168. 178. 170	255.255.0.0	00:E0:4B:1F:F3:63	no action	0:00:51 (busy 68.7%)

In this field the network interface can be adjusted.

2.1 Explanation of the fields

■ IN Address

IN Address
192.168. 178. 170

Setting of the IN address.

In the front area a number between 172.16. and 192.168. can be chosen.

The subnet (third figure of the IN address) can be adjusted freely between 1 und 255.

The last IN interface should be between 161 und 180.

■ Netmask

Netmask
255.255.0.0

Concerning the netmask, the B or C net can be chosen.

■ HW Address

HW Address
00:E0:4B:1F:F3:63

It is about a fixed entry which is preset by the hardware.

■ Action

Action
no action

Apart from „no action“, „reboot the System“ can be adjusted here, too.

■ Uptime

uptime
0:42:30 (busy 1.2%)

This window shows the operation time of the system.

■ Temperature

temperature
board: 50°C cpu: 60°C

This field shows the temperature of the system (is only diplayed in case of LX modules).

2.2 Change settings

In order that an adjustment is adopted by the system, „reboot the System“ must be chosen in the window „Action“ and afterwards the button „enter“ must be pressed.

2.3 Undo the settings

By pressing the „clear“ button all settings are cancelled.

3. Control Center

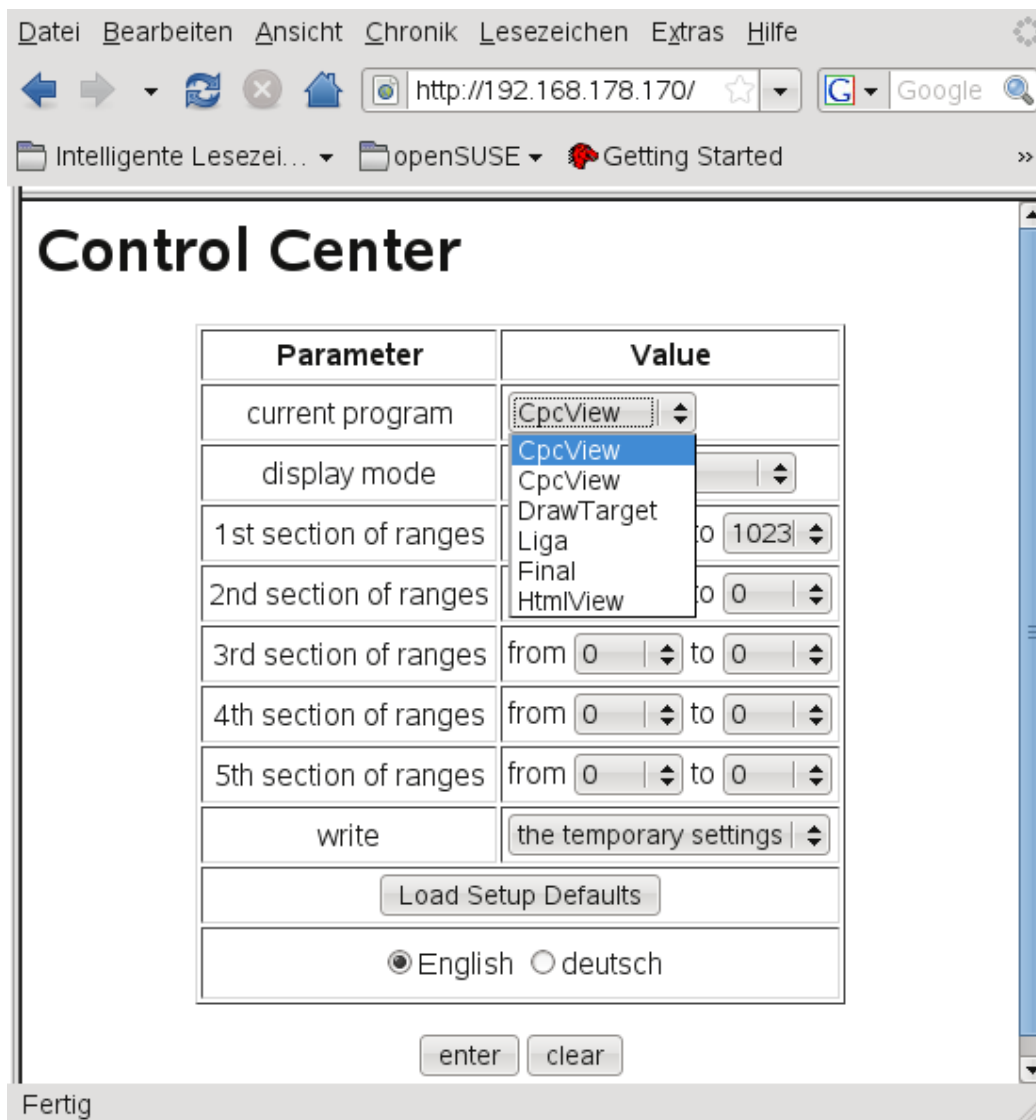
Here the start parameters can be adjusted, with which the Display Controller shall boot every time.

Control Center

Parameter	Value
current program	CpcView ⬇
display mode	SVGA 800x600 ⬇
1st section of ranges	from 1 ⬇ to 1023 ⬇
2nd section of ranges	from 0 ⬇ to 0 ⬇
3rd section of ranges	from 0 ⬇ to 0 ⬇
4th section of ranges	from 0 ⬇ to 0 ⬇
5th section of ranges	from 0 ⬇ to 0 ⬇
write	the temporary settings ⬇
Load Setup Defaults	
<input checked="" type="radio"/> English <input type="radio"/> deutsch	
<input type="button" value="enter"/> <input type="button" value="clear"/>	

3.1 Explanation of the fields

- **Current program**

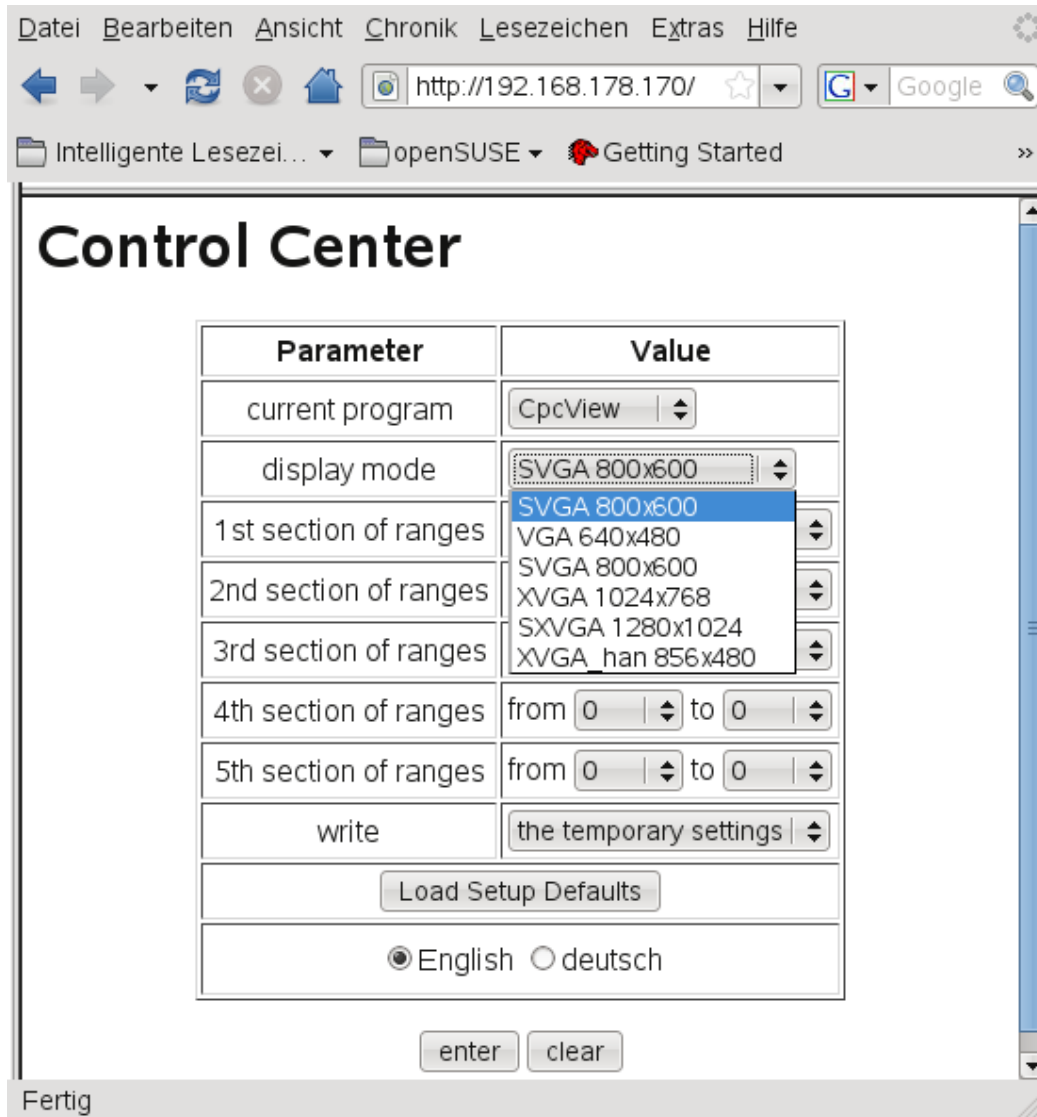


The display program can be chosen, with which the Display Controller starts at every reboot. The Display Controller contains five different display programs.

- cpcView
graphical original display of the Control - PCs
- DrawTarget
graphical display in another format; suitable for finals and division shooting
- Division
text – display of the division shooting
- final
text – display of the final

- HtmlView
HTML - result list display timezone

- **Display mode**



Here, the graphical resolution can be chosen.

- **section of ranges**

Here you can select the ranges, that shall be displayed.

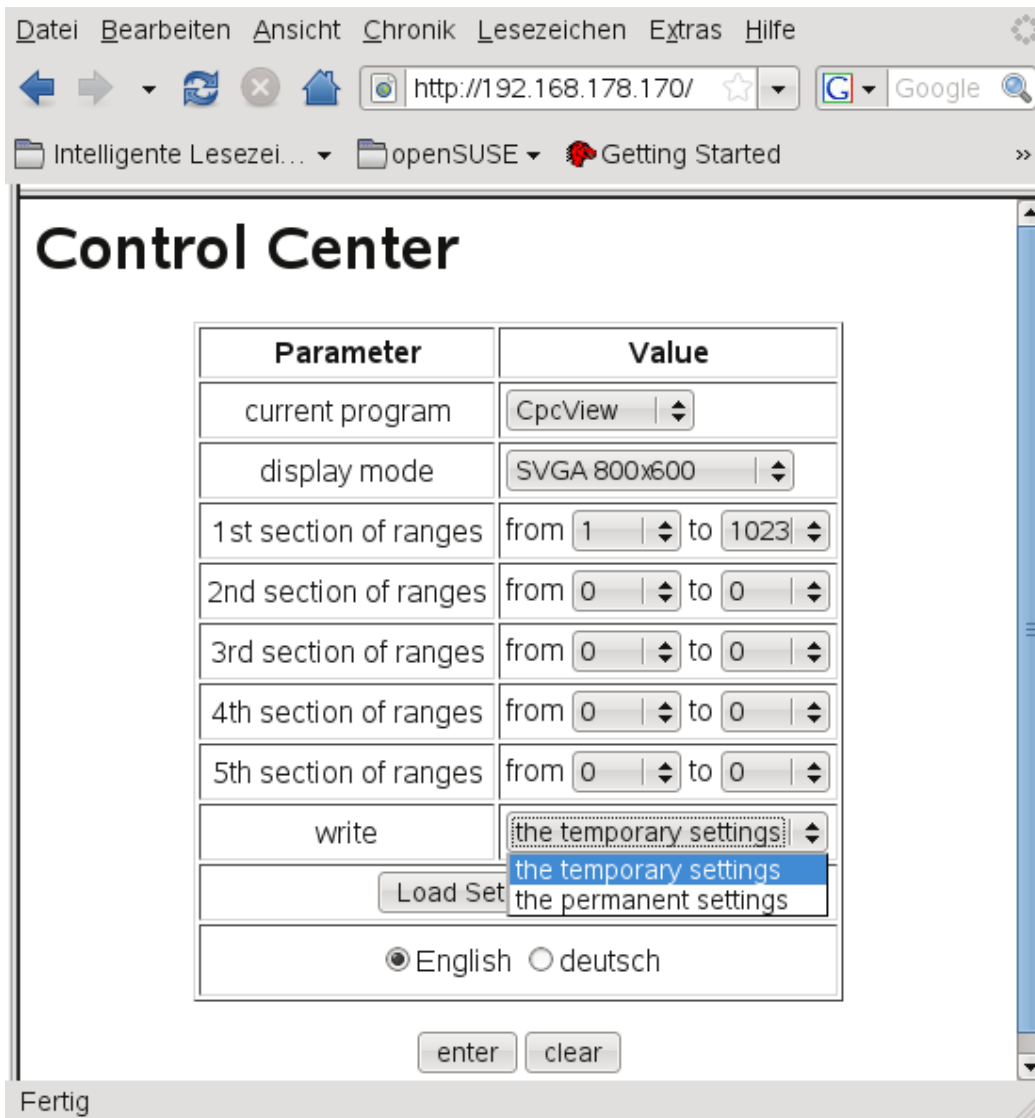
Example :

From 40 shooting stands in total only the stands 11 till 20 shall be shown and afterwards the stands 31 till 40.

Entry :

1st section of ranges from 11 to 20; 2nd section of ranges from 31 to 40.

■ Write



You can adjust in which way the settings shall be saved.

■ Load Setup defaults

The factory settings can be reset here.

■ Language

You can choose between English and German.

3.2 Change settings

All settings are adopted by pressing the „enter“ button in the Control Center. In order to display the settings, the system must be restarted.. The restart can be effected by adjusting „reboot the System“ under „Action“ and pressing afterwards „enter“.

3.3 Undo settings

By pressing the „clear“ key under „CPC Settings“ all settings are cancelled.

4. Program settings under Services

Under „Services“ it is possible to select the programs separately and adjust them specially.

4.1 CpcView

CpcView

Parameter	Value
Targets per screen	0
Holding time [sec]	0

4.1.1 Target per screen

Here can be adjusted how many targets shall be displayed simultaneously by the Display Controller.

4.1.2 Holding time

Please enter the time after which the display shall change.

4.2 DrawTarget

This program is particularly suitable to display graphically finals and division shootings.

DrawTarget

Parameter	Value
Foreground Color (RGB)	Red <input type="text" value="0"/> Green <input type="text" value="0"/> Blue <input type="text" value="1"/>
Background Color (RGB)	Red <input type="text" value="224"/> Green <input type="text" value="224"/> Blue <input type="text" value="224"/>
Holding time [sec]	<input type="text" value="0"/>

4.2.1 Colours

Here, you can change the colour of the display.

4.2.2 Holding time

Please enter the time after which the display shall change.

4.3 Final

With this the final can be displayed as a text.

Final

Parameter	Value
Foreground Color (RGB)	Red <input type="text" value="0"/> Green <input type="text" value="0"/> Blue <input type="text" value="1"/>
Background Color (RGB)	Red <input type="text" value="14"/> Green <input type="text" value="14"/> Blue <input type="text" value="14"/>
Holding time [sec]	<input type="text" value="0"/>
Font Size	<input type="text" value="0"/>

4.3.1 Colours

Here, you can change the colour of the display.

4.3.2 Holding time

Please enter the time after which the display shall change.

4.3.3 Font Size

The font size is displayed.

4.4 Liga

With this you can display the division shooting as a text.

Liga

Parameter	Value
Foreground Color (RGB)	Red <input type="text" value="0"/> Green <input type="text" value="0"/> Blue <input type="text" value="102"/>
Background Color (RGB)	Red <input type="text" value="224"/> Green <input type="text" value="255"/> Blue <input type="text" value="160"/>
Holding time [sec]	<input type="text" value="0"/>
Font Size	<input type="text" value="0"/>

4.3.1 Colours

Here, you can change the colour of the display.

4.3.2 Holding time

Please enter the time after which the display shall change.

4.4.3 Font Size

The font size is displayed.

4.5 HtmlView

HtmlView

Parameter	Value
Holding time [sec]	0 ⬆ ⬇ ⬆
Scroll Step No.	100 ⬆ ⬇ ⬆
Font Size	8 ⬆ ⬇ ⬆
Shared Folder	// 192.168. ⬆ 10. ⬆ 200 ⬆ /html

4.5.1 Holding time

Please enter the time after which the display shall change.

4.5.1 Scroll Step

Here you can enter how much the HTML display shall proceed.

4.5.1 Font Size

Please enter the font size for the display.

4.5.1 Shared Folder

Here the Samba server and the Samba Share is entered where the HTML result lists are stored.

4. Filelist under Services

When choosing „Filelist“, a list of the download data is displayed which the Display Controller has loaded at the moment.

Filelist of last Download

Download from Server: 192.168.178.200 - Date: 26. Jul 2008 10:32:46					
No	source	version	destination	size [byte]	date
1	/ftpboot/Mc4BootDev/dc/shootmasterd	0.8.5	/flash/shootmasterd	72300	8. Jul 2008 12:58:56
2	/ftpboot/Mc4BootDev/dc/start1.sh	2.0.3	/flash/meyton/start1.sh	2426	26. Jul 2008 10:32:40
3	/ftpboot/Mc4BootDev/dc/start2.sh	1.2.2	/flash/meyton/start2.sh	1899	22. Jul 2008 20:57:02
4	/ftpboot/Mc4BootDev/dc/local/start.sh	1.0.0	/flash/local/start.sh	1581	26. Mar 2007 14:20:04
5	/ftpboot/Mc4BootDev/dc/prog/dsplctrl	2.0.0	/flash/dc/dsplctrl	1508660	24. Jul 2008 18:18:50
6	/ftpboot/Mc4BootDev/dc/prog/cpcview	2.0.0e	/flash/dc/cpcview	5694200	24. Jul 2008 18:18:28
7	/ftpboot/Mc4BootDev/dc/prog/htmlview	2.0.0	/flash/dc/htmlview	5733012	24. Jul 2008 18:19:16
8	/ftpboot/Mc4BootDev/dc/prog/finale	2.0.0	/flash/dc/finale	5661272	24. Jul 2008 18:19:06
9	/ftpboot/Mc4BootDev/dc/prog/liga	2.0.0a	/flash/dc/liga	5640632	24. Jul 2008 18:19:26
10	/ftpboot/Mc4BootDev/dc/prog/drawtarget	3.0.1	/flash/dc/drawtarget	5710636	24. Jul 2008 18:18:48
11	/ftpboot/Mc4BootDev/dc/rc/xvga.rc	1.0.0	/flash/dc/rc	1536(+71)	5. Aug 2008 13:24:46
12	/ftpboot/Mc4BootDev/dc/rc/vga.rc	1.0.0	/flash/dc/vga.rc	1535	22. Mai 2008 14:12:28
13	/ftpboot/Mc4BootDev/dc/rc/svgarc	1.0.0	/flash/dc/svgarc	1535	22. Mai 2008 14:12:14
14	/ftpboot/Mc4BootDev/dc/rc/xvga.rc	1.0.0	/flash/dc/xvga.rc	1536	22. Mai 2008 14:12:40
15	/ftpboot/Mc4BootDev/dc/rc/xvga-han.rc	1.0.0	/flash/dc/xvga-han.rc	1535	1. Jul 2008 11:59:28
16	/ftpboot/Mc4BootDev/dc/rc/sxvga.rc	1.0.0	/flash/dc/sxvga.rc	1537	22. Mai 2008 14:13:22
17	/ftpboot/Mc4BootDev/dc/www/dccgi.css	1.0.0	/flash/www/dccgi.css	1522	5. Apr 2007 14:19:54
18	/ftpboot/Mc4BootDev/dc/www/dccgi.cgi	2.0.0a	/flash/www/cgi-bin/dccgi.cgi	1570152	26. Jul 2008 11:30:52
19	/ftpboot/Mc4BootDev/dc/www/dccgi_de.qm	1.0.1	/flash/www/cgi-bin/dccgi_de.qm	8618	25. Jul 2008 19:14:38
20	/ftpboot/Mc4BootDev/dc/www/dccgi_en.qm	1.0.1	/flash/www/cgi-bin/dccgi_en.qm	8154	25. Jul 2008 19:14:38
21	/ftpboot/Mc4BootDev/dc/www/lang	1.0.1	/flash/www/cgi-bin/lang	3	26. Mar 2007 17:57:42
22	/ftpboot/Mc4BootDev/emb-stable/mc5timed	1.1.1a	/flash/mc5timed	18620	8. Jul 2008 12:58:28
23	/ftpboot/Mc4BootDev/emb-stable/mc5sbc.sh	2.0.0	/flash/meyton/mc5sbc.sh	1454	10. Dec 2006 11:03:32
24	/ftpboot/Mc4BootDev/emb-stable/mc5sbc	3.1.0	/flash/mc5sbc	43376	8. Jul 2008 12:58:24
25	/ftpboot/Mc4BootDev/emb-stable/setflatscreen	1.1.0	/flash/setflatscreen	23104	8. Mar 2008 17:02:50
26	/ftpboot/Mc4BootDev/emb-stable/qtlib.cpc	1.0.1	/flash/qtlib	6144000	10. Dec 2006 11:04:44
27	/ftpboot/Mc4BootDev/dc-lx/dc_lx.tgz	2.16.15a	/flash/dc_lx.tgz	3950011	19. Jul 2008 12:05:12
28	/ftpboot/Mc4BootDev/dc-lx/syslinux.cfg	2.16.15	/flash/syslinux.cfg	138	20. Apr 2008 19:07:18
29	/ftpboot/Mc4BootDev/dc-lx/vmlinuz	2.16.15a	/flash/linux	1003547	19. Jul 2008 12:05:28

5. Download unter Services

Download

Parameter	Value
IP address of tftp server	192.168. 178. 200

start Download

Here the server can be chosen from which new data shall be downloaded.